

LLLNLN

Lakelands Lifelong Learning Network

Register Now!

Explore and Enjoy!



Fall 2018

Check our website: <http://lakelandslln.org>

WELCOME AND CONTENTS

Welcome to LLN

I hope everyone is enjoying their summer break! Our 2018 statistics to date are similar to previous years. By the end of our spring term, we had 146 members. Across our winter and spring terms, we offered 54 classes with 632 registered seats.

For our fall term, we have 33 classes. A few of the new offerings include Pollinator Gardens, A Tour of the Connie Maxwell Children's Home, and a meeting with the author of the book "No Ordinary Soldier." There are also some old favorites. Exercise and activity classes like Water Aerobics, Line Dancing and Tai Chi remain popular. As requested, Living History Park is being offered in a cooler time of year. You'll see various classes categorized over several topic areas. So, there should be something for everyone.

If you're already a member, choose your classes and attend our July 25th registration kick-off event. Or, on-line registration will open during the registration event. If you're not a member, I encourage you to consider joining and enjoying the benefits of lifelong learning. We are again offering a third term discounted 2018 membership if you register early for 2019. That is \$20 for the remainder of 2018, plus \$50 for 2019.

Finally, we are still looking for volunteers to assume LLN leadership roles. Some institutes make volunteering a condition of membership. We don't do that. (It wouldn't really be volunteering if we did!) But volunteering is central to our existence. Member volunteerism ensures the program continues to reflect the needs and interests of our members. If you can help, there will be Board members at the registration event to discuss some of the volunteer positions available and answer any questions you may have.

John Bartoli
LLN President

Inside This Issue

Registration Information	3
Culture and Travel	4
Fine Arts	5
Health and Fitness	6
History and Government	10
Home and Garden	13
Nature and Environment	15
Religion	16
Science and Technology	17
Skills and Hobbies	19
Instructor Bios	20
Class Locations	23
List of Classes	24
Registration Form	25



REGISTRATION INFORMATION

Ready to Join LLLN?

You can use either of the two methods below to register:

- Register using the registration form at the end of this catalog. Complete the form and select the classes you are interested in. Mail the form and the associated fees to: LLLN Office, PO Box 50701, Greenwood, SC 29649.
- Register using the online registration system. Go to the LLLN website at: <http://lakelandslln.org>. Select the Online Registration tab at the top of the page and then follow the online instructions.

Fees

There is \$50 per calendar year membership fee which gives you access to enroll in as many classes as you'd like. There is a standard \$5.00 non-refundable charge per class. Some classes also have an additional materials fee or meal fee.

Class Size

Class size is based on the type of class — lecture, hands-on, excursions, etc. Many of the classes list a minimum number of registrations or a maximum. Unless stated otherwise, the default minimum number of registered participants is five. If we do not meet the minimum prior to the registration deadline, the class may be cancelled.

Wait List Policy

If a course you have requested has filled to capacity prior to receipt of your registration, you will be notified and automatically placed on a waiting list for the course. Should space become available in the course, you will be contacted and given the opportunity to enroll. You will not be charged for the class until you are enrolled.

Registration Deadline

If there is no specific registration deadline listed, the default deadline is two weeks prior to the class. If a course has not yet reached its maximum capacity, you may register for the course anytime prior to the registration deadline. To register for additional courses, use the online registration system, or complete another registration form and send it to the LLLN office (PO Box 50701, Greenwood, SC 29649) with a check for the associated fee.

Guest Policy

Active LLLN members may bring a guest to a class if there is space available in the class. You may purchase a guest pass from the registrar's office for \$15.00 plus the class fee. Contact the registrar's office for details. The contact information for the registrar's office is 864 388-8426 or lakelandslln@lander.edu.

Questions?

- ◆ Phone: (864) 450-9227
- ◆ Email: LLLNOffice@gmail.com
- ◆ Website: <http://lakelandslln.org>

CULTURE AND TRAVEL

A Look into Hispanic Culture

Course Number: 109

Instructor: Dana Gonzalez

Tuesday, September 11
10:00 am—11:30 am

Maximum class size: 20

Fee: \$5.25



This class provides an introduction into the Hispanic culture and community. It will help build an understanding of behaviors, attitudes, and beliefs - identifying similarities and differences between cultures. We will also review pronunciation of the Spanish language, practice meeting and greeting in Spanish, and learn some other basic vocabulary.

After class, consider joining your classmates at a local Hispanic restaurant. Each person will pay their own way.

Location: Piedmont Technical College

Using VRBO to Find Your Vacation Home

Course Number: 110

Instructor: Cookie Craft

Monday, October 22
10:00 am—11:00 am

Maximum class size: 20

Fee: \$5.00



Vacation Rental by Owner (VRBO) is a very popular website for finding and booking vacation homes. If you thought about using this website (also known as HomeAway), but felt you needed a little more guidance, then this is the perfect class for you. Our instructor will begin with an introduction to the VRBO website and show you how to get started. She will show you some navigational tips for using this website. She will also provide information on the VRBO pricing structure as well as a list of questions you may want to ask the owner before booking.

Location: Piedmont Technical College



FINE ARTS

Next Step to Watercolor

Course Number: 331

Instructor: Larry Connor

Four consecutive Fridays

October 12, 19, 26, November 2

1:00 pm—3:00 pm

Maximum class size: 15

Fee: \$5.00

You asked for more and here it is! This class will begin with simple drawing techniques and quickly progress to a continuation of the Winter 2018 – Watercolor for Beginners class. If you didn't take the winter class, you are still welcome to join the class if you have some experience using watercolor.

You will need to bring the following supplies to class. If you took the winter class, you should already have these items with the exception of fresh paper.

- watercolor paint
- brushes (no. 6 and no. 8)
- paper
- pencil and eraser
- support board
- tape
- paper towels
- glass or jar for water
- spray bottle
- optional items for different techniques: old tooth brush, textured sponges.

Location: Piedmont Technical College



HEALTH AND FITNESS

Mushrooms—A Healthy Food

Course Number: 415

Instructor: Susan Bender

Tuesday, September 18
1:30 pm—2:30 pm

Maximum class size: 10

Registration deadline: September 7
Fee: \$15.00



Learn about the world of mushrooms and understand the benefits of fresh and dehydrated mushrooms from “The Mushroom Lady.” Mushrooms are filled with nutrients, including vitamin B and minerals such as selenium, copper and potassium, making them a nutritious addition to your diet. Part of your learning experience will be a tasting experience with a mushroom snack.

Location: Piedmont Technical College

Hospice 101

Course Number: 418

Instructors: Kelly Buckshorn and Andrea Scott

Thursday, September 13
1:30 pm—3:00 pm

Maximum class size: 40

Fee: \$5.00



Hospice Care is life-giving and comforting health care for people who are living with a life-limiting illness. When cure is no longer a reasonable goal, hospice care provides comprehensive medical, psychosocial, and spiritual support—addressing the needs of the “whole person,” not just the illness. It also provides support to family members and caregivers who are coping with the complex consequences of illness, disability, and impending death.

The realities of loss and grief of the patient and family are addressed both during the illness and after the death. In this course, you will learn about the hospice philosophy, hospice team, who pays for hospice, the four levels of hospice care, community support services, and our hospice house.

Location: Hospice Store of Greenwood

Tai Chi

Course Number: 450

Instructor: Christie Talbert

Four consecutive Tuesdays
October 23, 30, November 6 and 13
9:30 am—10:15 am

Maximum class size: 12

Fee: \$5.00

Learn how to feel more invigorated, energized, and balanced with this natural flow of wellness. All exercises can be performed seated or standing. These exercises will address both stability and mobility through moving, balanced, meditation.

Wear comfortable clothing and preferably sneakers. Attendees must complete a Wesley Commons Hold Harmless Waiver.

Location: Wellness Complex at Wesley Commons

HEALTH AND FITNESS

Line Dancing

Course Number: 479

Instructor: Claudia Bartoli

Three consecutive Thursdays
 October 4, 11, 18
 10:00 am—11:30 am

Minimum class size: 10
 Maximum class size: 35

Fee: \$5.00



This is a beginner to high-beginner line dance class. The dances will range from the Electric Slide and Cupid Shuffle to a Waltz, fun Cha Cha's and more. New dances will be introduced each class while also reviewing previous dances.

Wear comfortable clothing and shoes that prevent you from slipping or tripping. Bring water.

Location: Asbury Hall at Wesley Commons

Water Aerobics

Course Number: 490

Instructors: Christie Talbert and Ashley Newman

Four consecutive Mondays
 September 17, 24, October 1, and 8.
 4:00 pm—4:45 pm

Minimum class size: 8
 Maximum class size: 12

Fee: \$5.00



Exercise in the water? Exactly! This class includes a 10 minute warmup, 30 minutes of low-impact aerobics, and a 5 minute cool down. This is a great cardio exercise with low impact on your joints. So, grab your suit and come on in. The water is great .

Please wear or bring your bathing suit. You may also want to bring shower sandals or other footwear that prevents slipping on wet surfaces. A locker room is available for changing. Attendees must complete a Wesley Commons Hold Harmless Waiver.

Location: Pool at the Wesley Commons Wellness Complex

Living with Diabetes

Course Number: 491

Instructor: Rebecca Wise

Friday, September 14
 10:00 am—11:30 am

Maximum class size: 30
 Fee: \$5.00



A Certified Diabetes Educator, Rebecca, will share information on "Living With Diabetes." Through the years, Rebecca saw what worked well and not so well in managing diabetes. She will provide tips on how to better manage diabetes, answer questions, and share ways to lower stress as well as improve exercise and sleep. She will also provide information on what's best to eat and how to prevent blood sugar swings. Participants will leave with new knowledge on how to improve their overall health.

Location: Wesley Commons Library

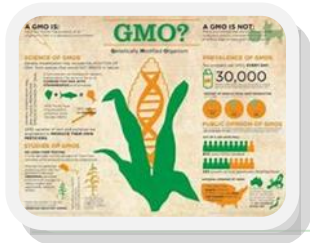
HEALTH AND FITNESS

GMO—What It Means to You

Course Number: 492
Instructor: Dot Blair

Tuesday, September 25
 1:30 pm—3:00 pm

Maximum class size: 45
 Fee: \$5.00



In this class we will learn about GMOs (Genetically Modified Organisms). Are they safe for you and your pets? How about organic foods? Can GMOs really affect my health? We'll answer these questions and more - let's delve in and see what we can do to be as healthy as possible.

Location: Piedmont Technical College

Understanding Medical Marijuana

Course Number: 493
Instructor: Tillman Stevens

Tuesday, October 2
 10:00 am—12:00 pm

Maximum class size: 40
 Fee: \$5.00

The term medical marijuana refers to using the whole, unprocessed marijuana plant or its basic extracts to treat symptoms of illness and other conditions. Learn about the components of marijuana, the difference in THC and CBD, how it works on the brain, why it is used, short- and long-term side effects, synthetic marijuana, how to use it, where is it legal, legalization arguments and differing opinions, and even more pertinent information.

The U.S. Food and Drug Administration (FDA) has not recognized or approved the marijuana plant as medicine. However, scientific study of the chemicals in marijuana, called cannabinoids, has led to two FDA-approved medications that contain cannabinoid chemicals in pill form. In addition, medical marijuana is now legal in at least 29 states and the District of Columbia.

Location: United Way Center

Create a Home Herbal Apothecary

Course Number: 494
Instructor: Tillman Stevens

Tuesday, October 16
 10:00 am—12:00 am

Maximum class size: 40
 Fee: \$5.00

Learn about natural herbs and how to create an apothecary in your home. Using natural ingredients you can create plant-based medicines that offer many healing possibilities for the body, mind, and spirit. Tillman Stevens will explain the basics of an herbal apothecary and some of the ways to use natural ingredients such as teas, salves, capsules, tinctures, and other essential herbal remedies. This is "Health Made Simple!" Prepare medicines in your kitchen using just a few herbs and understanding a few simple techniques.

Location: United Way Center



HEALTH AND FITNESS

Circulation and Bemer Therapy

Course Number: 495
Instructor: Dot Blair

Tuesday, October 16
 1:30 pm—3:00 pm

Maximum class size: 45
 Fee: \$5.00



How important is circulation? Do you want more energy, strength and endurance? How about improved mental acuity, concentration and focus? Would you like to feel less stressed? Bemer Therapy is an instrument which keeps a check on the health of the human heart. Come learn about this amazing device that promotes self-healing and helps regulate all your body systems. You will be able to test it out before and after the class!

Location: Piedmont Technical College

Integrative Healing - Honoring My Creative Self

Course Number: 497
Instructor: Barbara Warner and Judy Markell

Thursday, September 13
 10:00 am—12:00 pm

Maximum class size: 40
 Fee: \$5.00



Spend time with Judy Markell and Barbara Warner exploring your true inner self. This course will focus on becoming comfortable looking at your inner true self, tapping into your own creative self, and experiencing loving kindness for yourself and others. It will include experiential activities and didactic information to help you to open to the part of yourself that creates and gives-back to the world. As you expand your awareness, embrace your true self, and speak your truth, your light can truly shine! Join in this eye-opening course that will be experiential, interactive, and fun! Wear comfortable clothing.

Location: Wesley Commons Library

Volunteers make a real difference in the lives of others
 They are a gift to the community
 They are the heart of a community
 They are paid in six figures - SMILES
 They don't just *do* the work— they *make it* work
 They do not get paid, because they are priceless!



HISTORY AND GOVERNMENT

Edgefield, SC Tour: The Gateway to Southern History

Course Number: 516

Instructor: Tonya Guy (coordinator)

Friday, October 5
10:00 am—3:00 pm

Maximum class size: 30

Fee: \$34.00 (includes museum fee, two tours, and lunch)



Come spend a fascinating day exploring Edgefield, SC. Learn about the history of the area and have lunch at the delightful Old Edgefield Grill. We'll start the Tour in Edgefield with Tonya Guy (who has been known to dress in period costume) at the Discovery Center Museum—learning about historic Edgefield. We will then visit The Village Blacksmith to see how masterpieces of metal are created. Lunch will be served at the Old Edgefield Grill at 202 Penn St. that is located in an old southern home full of heritage and history, a unique and appropriate setting for southern fine dining. In the afternoon, we will visit the Carolina Moon Distillery and then we will prepare for Halloween with a Murder and Mayhem Tour that covers the past 230 years of Edgefield's torrent history. This is sure to be a wonderful day with a variety of activities to entice and excite LLLN members!

Wear comfortable, weather-appropriate clothes.

Location: Meet at the Discovery Center Museum

The Living History Park

Course Number: 549

Instructor: Lynn Thompson

Wednesday, October 10
10:45 am—2:00 pm

Minimum class size: 15
Maximum class size: 30

Registration deadline: October 1
Fee: \$30.00 (includes tour and lunch)



Notes on Accessibility:

The Gardens at the opening of the park are paved and wheelchair accessible. All of the main buildings are wheelchair accessible. The remainder of the park is not paved. Walking is on flat and mildly sloping ground, which can be traversed with walking sticks, canes, and walkers. A wheelchair may be possible on the park grounds, but it would be rough.

Like many small towns and communities across America, North Augusta was on the brink of losing its distinctive character to the forces of commerce and enterprise. Change in the streetscape of America is inevitable and, in many cases, desirable. The streets and buildings that give character to a neighborhood, however, are part of a community heritage that should be passed from one generation to the next.

The Olde Towne Preservation Association came into being in 1991 to help preserve the heritage and character of a slice of North Augusta. The Living History Park was developed so the general public may witness history firsthand through exhibits and demonstrations of colonial life. This 7.5 acre park with natural springs provides hands-on educational experience into the history of our area. The Park was also designed so the community could enjoy a passive greenway atmosphere reminiscent of the 18th century – representing North Augusta and surrounding areas of the 1716–1785 period during which it played a vital role in the development of South Carolina and Georgia (colonies at the time) through the Indian Trade.

Join us for an educational tour and buffet luncheon at the Living History Park. Please arrive by 10:45 am so we can get everyone parked, assembled, and signed in. Our tour will begin promptly at 11:00 am, enjoying the Gardens at North Augusta, Walking Trail, Herbal Garden and the upper part of the park, bringing us to the barn. A wonderful buffet luncheon will be served at the barn allowing time for discussion and rest. Following lunch, the tour will continue through the remaining park and buildings. Along the tour expect to meet volunteers in period clothing and character, bringing the 1700s alive for our experience.

Wear comfortable clothing and shoes. Dress in layers since we will be touring both indoors and outdoors.

Location: Living History Park, North Augusta, SC



HISTORY AND GOVERNMENT

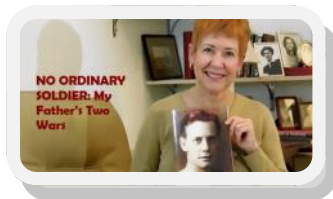
No Ordinary Soldier—My Father’s Two Wars

Course Number: 559

Instructor: Liz Gilmore William

Wednesday, September 12
10:00 am—11:30 am

Fee: \$5.00



Meet Liz Gilmore Williams, the author of “No Ordinary Soldier: My Father’s Two Wars.” This is the true story about a young man from a gritty Pennsylvania mill town who enlists in the Army Air Corps and heads for Hawaii, the “Paradise of the Pacific.” There, he and his buddies defend Oahu while it explodes and burns in the bombing of Pearl Harbor.

Liz uses period photos, a map, and selected passages from her book to describe her father’s service in the larger context of World War II in the Central Pacific. Her book placed as a Finalist in the 2018 International Book Awards in the genre of military history. Her father survived the attack on Pearl Harbor and served on other Pacific outposts with the 7th Army Air Force, the same force in which Louis Zamperini of *Unbroken* served. She will cover such topics as the buildup of troops in Hawaii, the bombing of Pearl Harbor, the island-hopping campaign, the importance of mail in World War II, and the sacrifice and contributions of everyday Americans to the war effort.

Location: Wesley Commons, Asbury Hall

Tour of Connie Maxwell Children’s Home

Course Number: 560 A and 560 B

Instructors: Debbie McDowell

Tuesday, September 18 (560A)
or
Thursday, September 20 (560B)
10:00 am—11:30 am

Minimum class size:
15

Fee: \$5.00



Join us for this tour of the Connie Maxwell Home to learn the interesting story behind the home, the many people who have passed through, and the impact they have had on our community. This class content is great for Greenwood history buffs!

Location: Connie Maxwell Home, Main Administration Building

A FEW LAUGHS..

Everyone my age is older than me.

Middle age is when you’re faced with two choices and you choose the one that will get you home earlier.

Just remember, it’s better to pay full price than to admit you’re a senior citizen.

HISTORY AND GOVERNMENT

Sermons in Stones: History of English Cathedrals

Course Number: 561

Instructor: Carol McGinnis Kay

Three consecutive Thursdays

October 4, 11, and 18

1:30 pm—3:00 pm

Minimum class size: 10

Fee: \$5.00



Many of us have seen Canterbury or St. Paul's Cathedrals in person or in films and admired their beauty. Here is your chance to learn the meaning behind the artistry. Dr. Carol McGinnis Kay, Professor of English Emerita, USC, will trace the history and message of English cathedrals from small Anglo-Saxon churches to the bombs falling in World War II.

October 4: We learn about the earliest stone churches in England and the new Norman style introduced by the invading army of William of Normandy in 1066. The Normans wanted to demonstrate their military prowess and have their churches declare the power and might of God. Two buildings will be explored in detail: Escomb Village Anglo-Saxon Church and Durham Cathedral, widely considered the best example of Norman architecture in Europe.

October 11: A new style sweeps Europe in the twelfth century, thanks to the innovative ideas of Abbot Suger at Saint Denis in Paris. This new ecclesiastical style was known at the time simply as "the new French style." We now know it as Gothic. Learn how to "read" a Gothic building with its sermons about humanity's longing for God through color, number, and shape. Two buildings will be explored: Canterbury Cathedral, the first church in England to introduce Gothic elements, and Salisbury Cathedral, perhaps the ultimate in English Gothic design.

October 18: Sir Christopher Wren intensely disliked what he considered the excesses of Gothic design, and when the Great Fire of London in 1666 destroyed medieval St. Paul's, he saw his chance to rebuild the cathedral in the 'new' Romanesque style of St. Peter's Basilica in Vatican City. He also wanted the building to reflect the new emphasis on congregational worship and the sermon. We trace his designs and the construction of St. Paul's. We conclude with a look at the two differing responses to damage during the blitz of World War II: St. Paul's and St. Bride's did careful restorations, using Wren's original drawings, while Coventry built something entirely new.

Location: Wesley Commons, Asbury Hall

The Beginnings of Greenwood

Course Number: 562

Instructor: Brenda Liner

Monday, September 10

1:00 pm—2:30 pm

Maximum class size: 25

Fee: \$5.00

Learn how Greenwood moved from becoming a Township to a City. Find out if Main Street has always been Main Street and many other fascinating facts about the town.

Location: United Way Center

HOME AND GARDEN

Pollinator Gardens

Course Number: 642

Instructor: Ann Barklow

Monday, September 10
9:30 am—11:00 am

Maximum class size: 12

Fee: \$5.00



City Horticulturalist, Ann Barklow, will talk about what pollinators are, why are they important, and how to create a habitat for them. We will meet at the Veterans Plaza Pollinator Garden across from Hamptons Place. We will identify certain pollinators, and talk about Monarch Waystations that provide breeding habitats for Monarch butterflies.

Wear comfortable outdoor clothing.

Location: Veterans Plaza Pollinator Garden

What is Identify Theft and Why do I Need Protection?

Course Number: 679

Instructors: Tim and Deanna Pletcher

Monday, September 24
10:00 am—11:00 am

Fee: \$5.00



This course will define what Identity Theft is and cover issues that South Carolina residents face. Topics covered include: information on recent data hacks and breaches, what information identity thieves want, common sense things to help reduce identity theft, what should be monitored to prevent or detect identity theft, and identity restoration.

Location: Piedmont Technical College

Got Fish? Learn to Cook It!

Course Number: 697

Instructor: Gary Burton

Monday, September 17
11:00 am—12:30 pm

Maximum class size: 10

Fee: \$17.00



Searching for a way to make your fish meal taste great and not fishy? Or maybe you're always looking for new ways to present a fish dish. Join us for a cooking class with Mr. Burton of "Off Tha' Hook Seafood and Grill" in Abbeville. We will learn how to prepare a meal with fish and then we'll enjoy it afterwards.

Location: Off Tha' Hook Seafood and Grill Restaurant, Abbeville

HOME AND GARDEN

Proverbs 31 Winery

Course Number: 698

Instructors: Peggy and Martin Cwiakala

Saturday, September 15
2:00 pm—3:00 pm

Minimum class size: 8
Maximum class size: 20
Fee: \$5.00



Bringing the “sweetest little winery in SC” to you! Learn about the wine making process of Proverbs 31 Winery. As winemakers, they use local fresh ripe fruit and beautiful flowers to make wine through a long loving process. Some of their recipes are over 30 years old, some hand-developed (not available in books), and others were handed down from other cultures. As an added bonus, you will be able sample coffee from the Coffee Roost, while surrounded by artwork from local artists at the Artist’s Coop in the historic downtown square in Laurens, SC.

Note: There will be an additional \$5 charge to be paid the day of the class for the wine tasting portion.

Location: The Artist’s Coop, Laurens

Basic Auto Maintenance

Course Number: 69

Instructor: Jason Homme

Tuesday, September 25
10:00 am—12:00 pm

Maximum class size: 40
Fee: \$5.00



This class will inform and instruct vehicle owners on the basics of proper vehicle maintenance and the importance of heeding vehicle warning signs. It will also include a brief mechanical synopsis and a summary of the inner working components of the engine. Instruction will be provided on:

- Antifreeze variances
- Oil consistency and changes
- Battery installation and warning signs
- Brake pad replacement
- Scheduled vehicle check-ups

Designed to assist the layman with understanding how-to tasks, this class is specifically arranged to teach routine vehicle maintenance that can reduce and prevent costly automotive shop repairs.

Location: United Way Center

NATURE AND ENVIRONMENT

Lake Jocassee Waterfall and Fall Foliage Tour

Course Number: 839

Instructor: A Lake Jocassee Tour Guide

Wednesday, October 17
10:00 am—12:30 pm

Minimum class size: 10
Maximum class size: 14

Fee: \$35.00 (plus entrance fee to park)

Experience the incredible views and stunning waterfalls on Lake Jocassee. Yes, we said on! We will take a 2-hour pontoon boat tour on the lake enjoying numerous waterfalls and fall's color explosion. Lake Jocassee has four major waterfalls and multiple smaller falls and most of these falls can only be accessed by boat. National Geographic named Jocassee Gorges one of "50 of the World's Last Great Places – Destination of a Lifetime" in a four-page spread "Jocassee Gorges: An Intense Concentration of Waterfalls."

There will be an additional fee to be paid at the entrance of the Devils Fork State Park on the day of the class:

- \$5 adults
- \$3.25 South Carolina residents over age 65.

Plan to arrive by 10:00 am to park and use the facilities located in the park. Meet at the main boat ramp at the Devils Fork State Park by 10:20 am to board; we will leave at 10:30 am. Let your host know if you will not make it so we don't wait for you at the dock!

While it is handicap accessible, wear shoes appropriate for getting on and off the boat. Other items you might want to consider: hat, sunscreen, light rain jacket (since they are in a rain forest), and binoculars (you never know what we might see).

They will have cold bottled water on board, but you are welcome to bring a small cooler with other drinks and/or snacks. You are welcome to bring a picnic lunch to enjoy in the State Park after the tour.

Note that the class size limitations are based on one boat rental. If there is enough interest, we may be able to rent two boats. If so, we would need a minimum of 19 registrations and maximum of 28.

Location: Devil's Fork State Park



RELIGION

History of the Nativity Crèche

Course Number: 1006

Instructor: Phyllis Van Swol

Wednesday, November 14
10:00 am—11:30 am

Maximum class size: 20

Fee: \$5.00



We take treasured decorations out of storage each holiday season, including wreaths, ornaments, and nativity scenes. Even if you don't own a nativity scene, you have probably seen one and noticed the variations: different sizes, different materials, as stationary objects, and even as live plays. But do you know the origin of these scenes? Come learn the history – who staged the first nativity scene, where he was, and why. We will be introduced to ways of enriching your experience with nativity scenes.

Location: United Way Center

Interacting with Your Nativity Scene

Course Number: 1012

Instructor: Phyllis Van Swol

Wednesday, November 14
1:30 pm—3:00 pm

Maximum class size: 20

Fee: \$5.00

Get creative with your Nativity display. Explore alternate ways to show off your treasured Christmas Crèche. The traditional Crèche is a modeled representative or tableau of Mary, Joseph, and others around the crib of Jesus in the stable at Bethlehem. It is displayed in homes or erected for exhibition in a community during the Christmas season. This course will provide suggestions for:

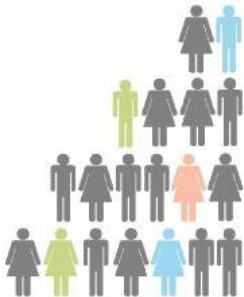
- Establishing new traditions with your nativity scene
- Displaying your nativity scene
- Caring for your nativity scene

Crèches of various sizes, materials, content, and style will be exhibited and examined. Each Crèche has its own special story and displaying one may follow a traditional or avant-garde approach. Take time to explore the possibilities and enrich your display!

Location: United Way Center

5 reasons to VOLUNTEER:

1. Develop new skills
2. Help a cause that lights you up
3. Meet new people
4. Connect with your community
5. Expand your horizons



SCIENCE AND TECHNOLOGY

Tour of Greenwood's W.R. Wise Water Treatment Plant

Course Number: 2061
Instructor: David Tuck

Wednesday, October 3
 1:30 pm—3:00 pm

Minimum class size: 10

Fee: \$5.00

Have you ever seen how the water you drink is treated to make it safe? Now is your chance to see the Greenwood Commissioners of Public Works' (CPW) facilities. The Greenwood Water System is the 12th largest water system in South Carolina. The source of water is Lake Greenwood and purification is performed at the award-winning W.R. Wise Water Treatment Plant. Treatment processes will be explained and shown in operation as you tour the facility.

Wear comfortable clothes and close-toed shoes.

Location: W.R. Wise Water Treatment Plant.

Canine Culture

Course Number: 2062
Instructor: Dr. Lehr Brisbin

Wednesday, September 19
 1:00 pm—3:45 pm

Minimum class size: 8

Fee: \$15.00

A specialist in canine olfaction (sense of smell), dog behavior and primitive dogs, Dr. Brisbin, has done extensive research in the two areas that he will talk about in this class:

- **Canine Detectives:** The nose knows—or does it? Dr. Brisbin has testified as an expert witness in numerous court cases regarding trained dogs' ability to discriminate human scent.
- **Carolina Dogs:** The hunt for the pure Carolina Dog; the primitive dogs among us here in the Southeast...traced back to the first dogs to arrive in North America possibly over 1400 years ago.

Location: Piedmont Technical College



Genetics and Autism

Course Number: 2063
Instructor: Leah M. Tribble, PhD

Two consecutive Mondays
 October 22 and October 29
 1:30 pm —3:00 pm

Minimum class size: 8
 Maximum class size: 25

Fee: \$10.00

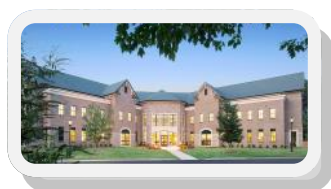
Have you wondered about the link between autism and genetics? The Greenwood Genetics Center (GGC) is pioneering a study of autism and will share some of the information in this class.

October 22: Discussion of autism and the Greenwood Genetic Center, followed by tour of research facilities.

October 29: Discussion of the genetics education program at the GGC followed by a short lab exercise.

We recommend wearing comfortable clothes for tour of GGC and the laboratory test demonstration.

Location: Greenwood Genetics Center



SCIENCE AND TECHNOLOGY

Genetics and Genomics: Approaches in Plant Biology Research and Beyond

Course Number: 2064

Instructor: Dr. Anna Blenda

Friday, October 12
10:00 am—11:00 am

Minimum class size: 10
Maximum class size: 40

Fee: \$5.00



Plants play extremely important roles in human life. We use them for food, to build houses, create materials, and medicines. Applied plant biology research is aimed at improving the quality of the existing plants using various traditional breeding and new recombinant DNA approaches.

Dr. Blenda will talk about several plant research projects and a number of genetic and genomic approaches that answer important biological questions. Two plants that will be discussed are Peach Tree Short Life and Monkey Flowers. We will look at the application of available databases in plant research using the examples of the Cotton Marker Database and the Genome Database for Rosacea.

Dr. Blenda has been an LLLN presenter in the past with excellent reviews and a request for more.

Location: USC School of Medicine, Greenville



SKILLS AND HOBBIES

Fall Grapevine Wreath— Make and Take

Course Number: 3022

Instructor: Rick McLain

Wednesday, October 24

2:00 pm—3:30 pm

Maximum class size: 20

Fee: \$30.00 (includes all materials)



This is an opportunity to create a new ornamental wreath to celebrate Autumn and Thanksgiving. Rick is an expert at helping all students create their own wreath with pride. His lessons are always informative and he demonstrates a real desire to make everyone successful with their creations. Come and enjoy a fun afternoon and take home your own grapevine wreath that you will display with pride.

Wreath, flowers, and bows are provided, but please bring the following to class:

- Scissors
- Wire cutters
- Pliers
- Glue gun with 5 long or 8 short glue sticks (if you have an extra glue gun, please bring it to share)
- Paper towels
- Plastic bag

Location: Piedmont Technical College

FRIENDS OF LLLN

What is “Friends of LLLN?”

It is part of LLLN’s fundraising plan. By contributing to LLLN, you are helping to ensure continued high-quality educational options for our growing membership. It is an opportunity to help us sustain a thriving lifelong learning program of excellence in the Lakelands.

Why become a Friend of LLLN?

With your help we can: Keep our fees low, continue the accessibility to a wide range of quality classes, maintain the office and the quality of our programming, cover essential expenditures such as printing, member outreach expenses, and necessary member related insurances, expand into communities that may not have the resources for lifelong learning, and be prepared for emergency operating expenses. You may also want to consider making a contribution to LLLN in memory of family members or friends, to honor someone special in your life, or to mark a special occasion. In such cases, LLLN will send a written note to the appropriate parties, acknowledging the contribution.

There are three categories of donors:

- **Council**—aggregate contribution of \$250 or more during the calendar year
- **Society**—aggregate contribution between \$100 and \$249 during the calendar year
- **Circle**—aggregate contribution between \$50 and \$99 during the calendar year

To become a Friend of LLLN, complete the form below and attach your gift check made out to “Friend of LLLN.”

Friend of LLLN

Lakelands Lifelong Learning Network is an IRS 501 (c) (3) Organization: All contributions are deductible to the extent allowed by law.

Name (Please print): _____ Date: _____

Mailing Address: _____

City: _____ State: _____ Zip: _____ Telephone: _____

email: _____ Check # _____ I prefer Anonymity: Yes ___ No ___

Honorarium: Yes ___ No ___ In Honor of: _____ My _____

In Memory of: Yes ___ No ___ In Memory of: _____ My _____

Send acknowledgement to:

Name: _____

Address: _____

Your signature: _____



INSTRUCTOR BIOS

Ann Barklow is a Certified Horticulturist, Master Gardener and Arborist with 35 years in the Horticultural and Landscaping Field. She works part time with the City of Greenwood as a Horticulturalist, Greenhouse Grower, Volunteer Coordinator, and IPM Consultant. Ann assists with the Festival of Flowers topiaries and contributes to the landscape design in the City of Greenwood with an emphasis on sustainability and protecting pollinators, songbirds, and monarchs. She serves on the Piedmont Tech Horticultural Advisory committee along with Bee City USA, America in Bloom, Lakelands Master Gardener Board of Directors, Ann is the instructor for "[Pollinator Gardens](#)."

Claudia Bartoli moved here from Ohio two years ago where she was a Physical Education teacher for 25 years. Before moving to South Carolina, she line danced weekly for five years. Claudia is the instructor for the "[Line Dancing](#)" class.

Susanne Bender is the owner of Sonnenhof Farms in Due West and provides mushrooms to many local restaurants. She sells her mushrooms and honey at the Greenwood Nursery. Susanne graduated from the University of Vermont as a Family Nurse Practitioner, where she took classes on healthy eating and Chinese medicine. She maintains a healthy lifestyle through nutritional eating, Tai Chi, and Reiki. Susanne is the instructor for "[Mushrooms—A Healthy Food](#)."

Dot Blair is a retired special education teacher. She is a certified holistic health practitioner through the American Association of Drugless Practitioners. She is an Integrative Health Coach who graduated from the Institute of Integrative Nutrition. Dot holds a Master's in Education and a Bachelor of Science in Education. It is her passion to be able to empower others to live the best life possible. Dot is the instructor for the courses "[GMOs—What It Means to You](#)" and "[Circulation and Bemer Therapy](#)."

Dr. Anna Blenda is a Clinical Associate Professor of Biochemistry at the USC School of Medicine Greenville. Her previous appointment was as an associate Professor of Biology at Erskine College where she taught genetics, molecular and cell biology, and biotechnology for eight years. She holds a combined BS/MS degree in Biology and English, a PhD in Biotechnology, and a PhD in Genetics from Clemson University. In 2015-2016 Dr. Blenda spent nine months doing a research sabbatical, studying innate immunity in fighting molecular mimicry. This served as a launching pad for her current research, investigating antimicrobial properties of the human galectin proteins, as a collaboration with the Stowell lab. Dr. Blenda is the presenter for the class, "[Genetics and Genomics: Approaches in Plant Biology Research and Beyond](#)."

Dr. I. Lehr Brisbin "Bris" earned his Ph.D. in Zoology from the University of Georgia in 1967 and has worked primarily as a Research Ecologist at the Savannah River Ecology Laboratory and as a professor at University of Georgia, Clemson University, Colorado State University, University of South Carolina and other educational institutions. Bris is an ex-officio member and ecologist for Camping Ministries of the Carolinas (CMC) formerly known as Camp Fellowship. He will share his knowledge in the class, "[Canine Culture](#)."

Kelly Buckshorn is the Director of Development with HospiceCare of the Piedmont. Kelly is one of the two instructors for the class "[Hospice 101](#)."

Gary Burton was born and raised in Abbeville. He was trained to cook at an early age by his mom and grandmother. His grandfathers taught him his love of the outdoors, especially fishing. Off Tha' Hook restaurant is family-owned and operated. Their mission is to provide the freshest and best tasting seafood with outstanding customer service. Gary is the instructor for the class, "[Got Fish? Learn to Cook It!](#)"

Larry Conner comes from a family of artists—some good and some very good. He has enjoyed working with wood, steel, glass, pastel, pencil...and his interests continues to grow. Larry has a passion for helping others get pleasure from creating their own artwork. Larry is the instructor for "[Next Step to Watercolor](#)."

Cookie Craft was a teacher and technical writer/editor in her former life. She's been retired for ten years and now enjoys many activities - and loves to plan vacations. She has been using VRBO for about eight years and has seen how it has grown in popularity. Since she has been so involved with VRBO, she has learned several tips and tricks that she would like to pass along in the class, "[Using VRBO to Find the Right Vacation Home](#)."



INSTRUCTOR BIOS

Peggy and Martin Cwiakala are the owners and operators of Proverbs 31 Winery in Newberry, SC. Together they do every step needed to create a fine bottle of specialty wine. Peggy is a writer who owns a winery. Martin is an engineer and serves as the Manager of Operations with his attention to detail. They are the facilitators for "[Proverbs 31 Winery.](#)"

Dana Gonzalez is a teacher, artist, and watercolorist. Dana has taught middle school thru university level Spanish and English as a second language. She also has over twenty-five years of experience in Hispanic outreach and currently works part-time as an interpreter. She travels extensively with her husband and family in the U.S. and abroad. One of Dana's passions is art and she was named Abbeville Artist Guild Artist of the Year for 2016. Dana is the instructor for "[A Look into Hispanic Culture.](#)"

Tonya Browder Guy was born in Augusta, Georgia and has lived all her life in South Carolina. She is currently the Executive Director of the Tompkins Memorial Library, a position she has held since 1998. Since becoming Director, she has played an important role in the organization of the library's vast collection of books and other materials, and has authored or co-authored seven books on Edgefield County genealogy and history. Tonya is also the Archivist at the Edgefield County Archives and the Tourism Director for the Town of Edgefield. She is the coordinator for the "[Edgefield SC Tour: The Gateway to Southern History.](#)"

Jason Homme owns and operates CARQUEST in Greenwood. He enjoys helping others learn how to care for their vehicles and he recommends parts and supplies that will assist them with the process. He has lifted Greenwood's CARQUEST store to national prestige, and he's one of the top-grossing independent branches on the East Coast. In December 2017, Jason was recognized as a star by the Connect Young Professionals, a program of the Greenwood SC Chamber of Commerce. He teaches car care classes for women, senior citizen classes and CTI technical classes for area mechanics. Jason is the instructor for the session on "[Basic Auto Maintenance.](#)"

Carol McGinnis Kay is a retired Professor of English and former Dean of Humanities and Social Sciences, USC-Columbia. A Shakespeare specialist, she is also the co-author of *G is for Grafton: The World of Kinsey Millhone*, which won an Edgar in 1998. She has presented several prior classes for LLLN; this semester she will be the presenter for, "[Sermons in Stone: History of English Cathedrals.](#)"

Brenda Liner is a retired Greenwood School District 50 history teacher. She is married to Blake Liner who is from one of the oldest families in Greenwood (Thomas Weir and John Blake who settled the area). Brenda and Blake have three children to pass down their legacy. Brenda is the instructor for the class, "[The Beginnings of Greenwood.](#)"

Rick McClain has been doing floral design since 1972. A native of Greenwood, he is the owner of Greenwood Flower Market. A member of the SC Chapter for Professional Florists, he has received numerous awards for floral design. Rick was chosen twice as Top Designer for SC State Floral Design. He has taught many design classes to professionals and amateurs alike with excellent reviews. Join Rick in the class, "[Fall Grapevine Wreath: Make and Take.](#)"

Debbie McDowell is Director of Church and Partner Services at Connie Maxwell Children's Home. She came to Connie Maxwell in July 2014. Prior to that, Debbie worked with Missions Mobilization at the South Carolina Baptist Convention from 1988-2010 and then served as a Missional Church Consultant from 2010-2014. Debbie has been involved with mission work in more than 30 countries. Debbie will be the guide for the "[Tour of Connie Maxwell Children's Home.](#)"

Ashley Newman has a degree in exercise science and 20 years of experience in dance, which included teaching as well as participation. She has led exercise groups at Greenwood Rehab and Planet Fitness, as well as individual exercise. Ashley is one of the instructors for "[Water Aerobics.](#)"

Tim and Deanna Pletcher, Legalshield Independent Associates, have been Legalshield members since 2004 and Associates since 2016. They have lived in the Greenwood community since 2005 with their two children, Jacob and Anna Grace. They enjoy helping individuals, families, employees, and small businesses gain legal and identity protection through the membership programs of Legalshield. They will be the instructors for "[What is Identify Theft and Why Do I Need Protection?](#)"

Andrea Scott is the of Development Coordinator with HospiceCare of the Piedmont. Andrea is one of the two instructors for the class "[Hospice 101.](#)"



Tillman Stevens began his journey into natural medicine as a young child, learning from his grandmother about roots and herbs you could use for various ailments. Years later, he revisited natural medicine when his wife was diagnosed with liver failure. After finding natural solutions to heal her liver, he began investigating the natural remedies they could use to replace each of the pharmaceuticals that contributed to his wife's liver issues. That journey continues today as they strive to teach others about natural alternatives and make natural remedies to assist those needing help. Tillman will be teaching two classes, "[Understanding Medical Marijuana](#)" and "[Create a Home Herbal Apothecary](#)."

Christie Talbert is the Wellness Director at Wesley Commons. She has a Bachelor's degree in Exercise Science EP-C. She has experience instructing group exercise classes in Spin, TRX, Water Aerobics, Tai Chi, corrective exercise classes, balance, and overall strength and conditioning. Prior to joining Wesley Commons, Christie worked at Ladies Choice in Columbia as well as Wellness Works and Greenwood Rehab here in Greenwood. Christie is the instructor for "[Tai Chi](#)" and "[Water Aerobics](#)."

Dr. Leta M. Tribble is the Director of Education at the Greenwood Genetic Center. She has been with the Center since 2000 and coordinates the Center's Outreach Education Program and assists in the Center's post-doctoral and medical residency training programs. Leah is the instructor for the class, "[Genetics and Autism](#)."

David Tuck is the Superintendent for the W.R. Wise Water Treatment Plant of the Greenwood Commissioners of Public Works. He has a B. S. in Biology from Lander University and has been Superintendent of the plant for 28 years. David is the facilitator to the tour to "[Tour of Greenwood's W.R. Wise Water Treatment Plant](#)."

Lynn Thompson is the Chairman of the Living History Park and President of the Olde Towne Preservation Association. She began volunteering with the Living History Park 26 years ago. Lynn has been involved with the North Augusta Historical Society, the Design Review Board, North Augusta 2000, North Augusta Cultural Arts Council, and The South Carolina National Heritage Corridor which identifies historically important sites for South Carolina. Lynn is the facilitator for the tour to "[The Living History Park](#)."

Phyllis Van Swol, a native of Nebraska, has been living in Greenwood for over 20 years. Phyllis' career is teaching. She is a member of Friends of the Crèche, a nonsectarian and nonprofit organization dedicated to further the tradition of the Crèche through collecting, exhibitions, and study. Phyllis has recently returned from a Friends of the Crèche course on the History of the Crèche in Dayton, OH, where they also have a museum dedicated to the Crèche. She is pleased to share her knowledge and love of the Crèche with LLLN members in two classes: "[History of the Nativity Crèche](#)" and "[Interacting with your Nativity Scene](#)."

Liz Gilmore Williams worked as a writer and editor for more than 20 years in Washington, D.C., for two offices of the U.S. Congress and other organizations. Her essay, "April Love," won an award in 2014 for creative nonfiction from the Virginia Writers Club. Her first book, *No Ordinary Soldier: My Father's Two Wars*, was published on December 7, 2016, to note the 75th anniversary of the attack on Pearl Harbor. She was a finalist for the 2018 International Book Awards contest in the military history division. As a speaker for South Carolina's Humanities Out Loud Program, Liz travels statewide to speak on human values, traditions, and cultures. Liz earned an MA in American studies from the University of Maryland and belongs to the South Carolina Writers Association. Liz is the instructor for the discussion on her book, "[No Ordinary Soldier: My Father's Two Wars](#)."

Barbara Warner and **Judy Markell** are co-founders of Nurse Navigators 4 Integrative Healing, a consulting/educational organization dedicated to bringing an integrative approach to medicine to the upstate. Barbara is a Board Certified Clinical Nurse Specialist in Psychiatric/Mental Health Nursing and has trained in Hypnotherapy. Judy has 38 years of clinical experience in the acute care setting. Both Barbara and Judy have facilitated seminars, retreats, and educational courses in a variety of settings. Both nurses are Reiki Masters, and have trained in Tai Chi, Guided Imagery, Breath Work, Energy Medicine, Yoga and Aroma Therapy. Barbara and Judy are co-presenters for the class, "[Integrative Healing—Honoring My Creative Self](#)."

Rebecca Wise is a RN, Certified Diabetes Educator. Having retired from Self Regional Healthcare with 43 years of experience, 28 years in diabetes education. At retirement in 2017, Rebecca held the position of Diabetes Education Coordinator. Rebecca developed the American Association Diabetes (AADE) Accredited program in 1989 and started a camp for children with diabetes in 1994. This was her greatest passion during her career. She won the SC Hospital Excellence Award in 1995 for the camp and the National AADE Camp Educator of the year in 2007. Rebecca is the instructor for, "[Living with Diabetes](#)."

CLASS LOCATIONS

Connie Maxwell Children's Home. 810 Maxwell Ave, Greenwood, SC

Devils Fork State Park. 161 Holcombe Circle, Salem, SC 29676

Discovery Center Museum. 405 Main Street, Edgefield, SC

Greenwood Genetic Center. 125 Gregor Mendel Circle, Greenwood, SC

The Artist's Coop. 113 E. Laurens Street, Laurens, SC

The Hospice Store. 217 N. Creek Blvd, Greenwood, SC

Off Tha' Hook Seafood and Grill. 301 South Main Street, Abbeville

Old Edgefield Grill. 202 Penn Street, Edgefield, SC 29824

Living History Park. 299 W. Spring Grove Avenue, North Augusta, SC 29861

Piedmont Technical College, Greenwood. James C Self Conference Center. Located at the fork of North Emerald and South Emerald Roads, Greenwood, SC
All classes held at Piedmont Tech will be in Room 209C

USC School of Medicine. 607 Grove Road, Greenville, SC 29605

United Way Center. 929 Phoenix St, Greenwood, SC.
Training Room is on the 1st floor, right off the main entrance

Veterans Plaza Pollinator Garden, Veteran's Museum. 106 Main Street North, Greenwood, SC

Wesley Commons. 1110 Marshal Road, Greenwood, SC.
All classes are located in the Main Building. Enter under the portico near the fountain.

W. R. Wise Water Treatment Plant. 202 Water Plant Road, Greenwood, SC (off Puckett's Ferry Road)



United Way Center
The LLLN Office
and
Location of Several Classes



LIST OF CLASSES

Date	ID	Name	Location	Weeks
Sep 10	642	Pollinator Gardens	Veterans Plaza Pollinator Garden	
Sep 10	562	The Beginnings of Greenwood	United Way Center, Greenwood	
Sep 11	109	A Look into Hispanic Culture	Piedmont Technical College, Greenwood	
Sep 12	559	No Ordinary Soldier	Wesley Commons, Asbury Hall	
Sep 13	497	Integrative Healing: Honoring My Creative Self	Wesley Commons, Library	
Sep 13	418	Hospice 101	The Hospice Store, Greenwood	
Sep 14	491	Living with Diabetes	Wesley Commons, Library	
Sep 15	698	Proverbs 31 Winery	The Artist's Coop, Laurens	
Sep 17	697	Got Fish? Learn to Cook It!	Off Tha' Hook Seafood and Grill, Abbeville	
Sep 17	490	Water Aerobics	Wesley Commons, Wellness Complex	4 weeks
Sep 18	560A	Tour of Connie Maxwell Children's Home	Connie Maxwell Home, Greenwood	
Sep 18	416	Mushrooms, A Healthy Food	Piedmont Technical College, Greenwood	
Sep 19	2062	Canine Culture	Piedmont Technical College, Greenwood	
Sep 20	560B	Tour of Connie Maxwell Children's Home	Connie Maxwell Home, Greenwood	
Sep 24	679	Identity Theft	Piedmont Technical College, Greenwood	
Sep 25	699	Basic Auto Maintenance	United Way Center, Greenwood	
Sep 25	492	GMO: What it Means to You	Piedmont Technical College, Greenwood	
Oct 2	493	Understanding Medical Marijuana	United Way Center, Greenwood	
Oct 3	2061	CPW Water Treatment Plant	W. R. Wise Water Treatment Plant, Greenwood	
Oct 4	479	Line Dancing	Wesley Commons, Wellness Complex	3 weeks
Oct 4	561	Sermons in Stone: Hist. of English Cathedrals	Wesley Commons, Asbury Hall	3 weeks
Oct 5	516	Edgefield Tour: Gateway to Southern History	Discovery Center Museum, Edgefield	
Oct 10	549	The Living History Park	Living History Park, North Augusta	
Oct 12	2064	Genetics and Genomics	USC School of Medicine, Greenville	
Oct 12	331	Watercolor: The Next Step	Piedmont Technical College, Greenwood	4 weeks
Oct 16	494	Create a Home Herbal Apothecary	United Way Center, Greenwood	
Oct 16	495	Circulation and Bemer Therapy	Piedmont Technical College, Greenwood	
Oct 17	839	Lake Jocassee Waterfall and Fall Foliage Tour	Devils Fork State Park, Salem	
Oct 22	110	Using VRBO to Find Your Vacation Home	Piedmont Technical College, Greenwood	
Oct 22	2063	Genetics and Autism	Greenwood Genetic Center	2 weeks
Oct 23	450	Tai Chi	Wesley Commons, Wellness Complex	4 weeks
Oct 24	3022	Fall Grapevine Wreath	Piedmont Technical College, Greenwood	
Nov 14	1006	History of the Nativity	United Way Center, Greenwood	
Nov 14	1012	Interacting with Your Nativity Scene	United Way Center, Greenwood	



REGISTRATION FORM—PART A

Lakelands Lifelong Learning Network Membership Application and Course Registration

PLEASE PRINT

PERSONAL INFORMATION: Please complete a separate form for each person registering.

First Name: _____ MI: _____ Last Name: _____ Birth Date: _____
 Street: _____ City: _____ Zip: _____
 Email: _____ Phone: Home (____) _____ Cell (____) _____

MEMBERSHIP STATUS Current 2018 Member Renewal New Member

Note: Annual Memberships expire December 31 each year. A current 2018 membership is required to enroll in 2018 LLLN courses. Membership fees are non-refundable.

\$50.00 Annual Membership 2018\$ _____
 \$400.00 Lifetime Membership Option\$ _____

COURSE REGISTRATION: A Signed Membership Application and Course Registration is Required for Each Term Participation.

- The Course ID, Title, and any applicable fees are listed in the course description in the catalog.
- If you are willing to host any of the classes that you signed up for, check the box on the right.
- To register for more than 8 courses, please attach your additional list with your name and contact information.
- Submit your check with your registration form. You may combine all associated fees into one check (membership fees and class fees). **Applicable course fees are due at time of registration.**

Class Host - YES

Course ID# _____	Course Title: _____	\$ _____	<input type="checkbox"/>
Course ID# _____	Course Title: _____	\$ _____	<input type="checkbox"/>
Course ID# _____	Course Title: _____	\$ _____	<input type="checkbox"/>
Course ID# _____	Course Title: _____	\$ _____	<input type="checkbox"/>
Course ID# _____	Course Title: _____	\$ _____	<input type="checkbox"/>
Course ID# _____	Course Title: _____	\$ _____	<input type="checkbox"/>
Course ID# _____	Course Title: _____	\$ _____	<input type="checkbox"/>
Course ID# _____	Course Title: _____	\$ _____	<input type="checkbox"/>

TOTAL AMOUNT DUE (Includes Annual Membership (if applicable) and Course Fee (if applicable)).....\$ _____

PAYMENT INFORMATION:

- Check Enclosed (Payable to Lakelands Lifelong Learning Network or LLLN) Check #: _____
 Credit Card (Visa, American Express, MasterCard, Discover Card)

Card Number _____ Exp. Date _____ Security Code _____

 Name (as it appears on card – please print) Signature

LAKELANDS LIFELONG LEARNING NETWORK ANNUAL MEMBER LIABILITY WAIVER (Waiver on LLLN Website)

In the interest of and to permit LAKELANDS LIFELONG LEARNING NETWORK (LLLN) to exist and to serve the Lakelands' senior community without fear of liability, I have read, understand and agree to the terms of LAKELANDS LIFELONG LEARNING NETWORK (LLLN) Member Annual Liability Waiver (Online document: <http://lakelandslln.org/register-for-courses>, download the LLLN Waiver in PDF format.)

Furthermore, I shall also indemnify, defend, protect, hold harmless, and release LAKELANDS LIFELONG LEARNING NETWORK (LLLN), its officers, agents, sponsors, sponsors officers, employees, and agents from and against any and all claims, loss, proceedings, damages, causes of action, liability, costs, or expense (including attorneys' fees and witness costs) arising from or in connection with my participation in said Lakelands Lifelong Learning Network sponsored courses, excursions, and events.

Signature: _____ Date: _____



REGISTRATION FORM—PART B

LLN Registration/Member Information

CLASS ATTENDANCE

To attend a class, you must be registered. You may register for a class at any time prior to registration deadline. If the class has reached its enrollment maximum, you will be placed on a waiting list. If a vacancy occurs, members will be contacted according to the registration date.

REGISTRATION DEADLINE

Some classes have a specific registration deadline that is listed in the catalog. If a registration deadline is not specifically listed, then the registration deadline is ten (10) days prior to the class date.

WITHDRAWAL/REFUND POLICY

If you have previously registered for a course and you need to drop it, we can refund fees associated with materials, food, or entrance payment only if you contact the registrar at least 5 days before the registration deadline. However, you will still be charged the standard \$5.00 processing fee. Membership fees are nonrefundable.

COURSE CANCELLATION

If we do not reach the minimum enrollment by the registration deadline date, we will need to cancel the class. You will be notified by e-mail and you will receive a full refund. Likewise, if we need to cancel a class at the last minute due to weather conditions or instructor cancellation, you will be notified by e-mail and you will receive a full refund.

LAKELANDS LIFELONG LEARNING NETWORK PHOTOGRAPHY POLICY

Please understand that by signing up for courses you are giving LLLN permission, for publicity purposes, to use any class or event photographs that are taken during the semester.

MEMBER SUPPORT

LLN is a nonprofit 501 (3) (c) organization. Donations are essential to the existence of this program. Members may make a tax-deductible donation to support the LLLN and its programs.

Yes, I would like to receive more information on how to donate/support the LLLN program.

EMERGENCY CONTACT:

Name: _____ Relationship: _____ Phone #: _____

VOLUNTEERING - THERE IS AN AREA OF SERVICE TO MATCH EVERY INTEREST!

People entering an LLLN class for the first time often comment on the vibrant energy they encounter among the members they talk to, as well as their interest in the many "course offerings." Academic classes, the arts, lectures, day excursions, special events, interactive programs, and more, contribute to that vibrant energy. Behind-the-scenes, LLLN volunteers—members like you—are collaborating and creating those offerings, which brings them a sense of community and great satisfaction in giving back to an organization focused on giving so much to them.

Active members are the creative lifeblood of Lakelands Lifelong Learning Network. They are involved in every aspect of LLLN operations to provide the many classes, lectures, events, and programs to you. We invite you to join us – check the areas in which you have an interest or would like to know more about.

- | | | |
|---|---|--|
| <input type="checkbox"/> Hospitality/Event planning | <input type="checkbox"/> Technology | <input type="checkbox"/> Organizational Planning |
| <input type="checkbox"/> Editing/Proofreading | <input type="checkbox"/> Event Set Up | <input type="checkbox"/> Office Assistance |
| <input type="checkbox"/> Curriculum Planning | <input type="checkbox"/> Class Host | <input type="checkbox"/> Board Member |
| <input type="checkbox"/> P/R | <input type="checkbox"/> Volunteer Outreach | <input type="checkbox"/> Fundraising |
| <input type="checkbox"/> Instructor | <input type="checkbox"/> Membership | <input type="checkbox"/> Brochure Delivery |
| <input type="checkbox"/> Photography | <input type="checkbox"/> Telephoning/Filing | <input type="checkbox"/> Event Planning |

Please indicate your background knowledge and/or career experience to assist in our efforts to better serve and understand our members and their talents: _____

Complete the form above and mail it or bring it to LLLN:

Mailing Address: Lakelands Lifelong Learning Network, PO Box 50701, Greenwood, SC 29648

Office Location: The United Center, 929 Phoenix Street, Greenwood, SC 29649

(NOTE: the LLLN Office hours vary - Please call before coming)

Questions?

Phone: (864) 450-9227

Email: llnoffice@gmail.com

Website: <http://lakelandslln.org/>

revised: 02/19/18







Contact Information:

Phone: (864) 450-9227
Email: LLLNOffice@gmail.com

Mailing address: Lakelands Lifelong Learning Network
PO Box 50701
Greenwood, SC 29648

Office location: United Center at 929 Phoenix Street
Greenwood, SC 29648

Website: <http://lakelandslln.org>